

Applications and features of the National Telematics Framework

For Service Providers

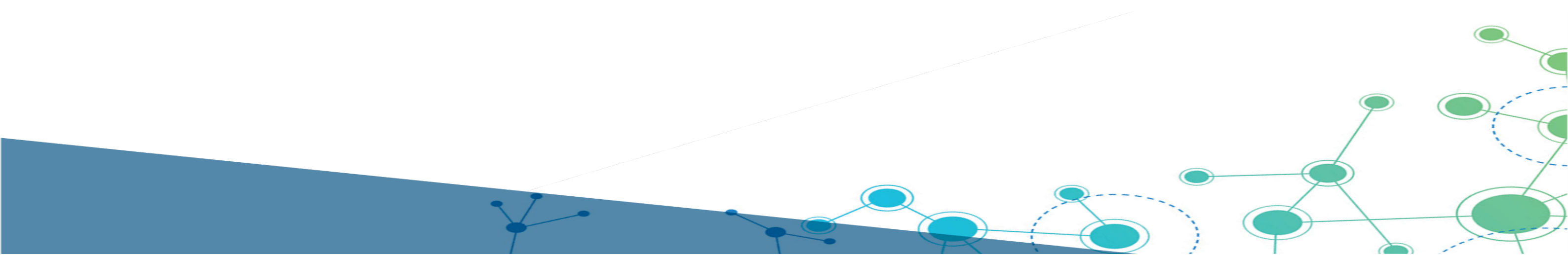
Fact Sheet on Access Arrangements

Updated: February 2020

The following table summarises the operating arrangements in place for various applications of the [National Telematics Framework](#).

Road Infrastructure Management (RIM)

Scheme	State/Territory	Specific location(s)	Who'll be interested?	Summary of access arrangement	Benefits	Getting started
Safety, Productivity, Construction and Environment Transport Scheme (SPECTS)	NSW	Greater Sydney: <ul style="list-style-type: none"> Sydney Newcastle Wollongong 	Transport Operators <i>(involved in construction activities)</i>	Eligible vehicles can carry extra mass. <i>Note: dependency on type of vehicle</i>	Increased payloads	<ol style="list-style-type: none"> Comply with operating conditions set out in the SPECTS Business Rules. Notify the registered provider of RIM for monitoring to begin.
Dangerous Goods Movement Study	NSW	Sydney (greater metropolitan area)	Transport Operators and Industry Associations <i>(involved in moving dangerous goods)</i>	This is a research activity, and is not immediately related to improved access	The study aims to better understand dangerous goods movements, especially around restricted infrastructure, but also regards urban encroachment and future planning.	<ol style="list-style-type: none"> Contact TCA (johng@tca.gov.au) to get a copy of the consent form and information.
Port Botany Container Movement Efficiency Scheme	NSW	Port Botany	Transport Operators <i>(involved in transporting containers in and out of Port Botany)</i>	Increased mass limits (CML) without needing the Mass Management Module of the National Heavy Vehicle Accreditation Scheme (NHVAS).	Increased payloads <i>Cost savings associated with NHVAS accreditation (particularly for smaller operators).</i>	<ol style="list-style-type: none"> Comply with the operating conditions included in the Port Botany Container Efficiency Notice. Notify the registered provider of RIM for monitoring to begin.



Telematics Monitoring Application (TMA)

Scheme	State/Territory	Specific location(s)	Who'll be interested?	Summary of access arrangement	Benefits	Getting started
PBS Vehicle Monitoring Scheme	TAS	Across Tasmania	Transport Operators <i>(PBS vehicles operating in Tasmania)</i>	New network access for PBS-approved A-Doubles or 30m B-Doubles.	Productivity and safety gains by using PBS vehicles on approved parts of the Tasmanian road network	<ol style="list-style-type: none"> 1. Comply with permit conditions. 2. Have Category B or C type-approved OBM systems fitted to the combination. 3. Notify the certified provider of TMA for monitoring to begin.
Special Purpose Vehicles (SPV) Monitoring Scheme	TAS	Across Tasmania	Transport Operators <i>(SPVs such as cranes operating in Tasmania)</i>	Improved network access	Increased payloads <i>Access to new parts of the network, that may have previously been not permitted.</i>	<ol style="list-style-type: none"> 1. Comply with permit conditions. 2. Notify the certified provider of TMA for monitoring to begin.

Hill Descent Monitoring (HDM)

Scheme	State/Territory	Specific location(s)	Who'll be interested?	Summary of access arrangement	Benefits	Getting started
36.5M trial of AB-Triples on Roelands Hill	WA	Roelands Hill	Transport Operators <i>(involved in transporting primary produce from regional areas)</i>	Category 7 (A) AB-triple combinations, with a tri axle dolly and tri axle trailers can operate at concessional mass limits on Roelands Hill	Transport operators can avoid the need to de-couple vehicles to access metropolitan locations and ports (via Roelands Hill). <i>Note: Other hills may become available in addition to Roelands Hill.</i>	<ol style="list-style-type: none"> 1. Comply with permit conditions 2. Notify the certified provider of HDM for monitoring to begin.

See also:

- [HDM - Current Access Trials](#)

