

TMA Special Purpose Vehicle Monitoring Schemes (VIC)



**Schemes using the Telematics Monitoring Application
(TMA) for the Department of Transport, Victoria**

January 2023

Title	TMA Special Purpose Vehicle Monitoring Schemes (VIC)
Document No.	TCA-SR19
Version	1.1
Date	January 2023
Status	Published

© Transport Certification Australia Limited 2023.

This document has been published by Transport Certification Australia Limited.

This document is copyright. Apart from any use as permitted under the Copyright Act 1968, no part may be reproduced by any person or process without the prior written permission of Transport Certification Australia Limited.

Transport Certification Australia Limited believes this publication to be correct at time of printing and does not accept responsibility for any consequences arising from the use of information herein. Readers should rely on their own skills and judgment to apply information to particular issues.

TCA™, Transport Certification Australia™, National Telematics Framework™, TCA Certified™, TCA Type-Approved™, Intelligent Access Program™, IAP®, IAP Service Provider™, IAP-SP™, In-Vehicle Unit™, IVU™, On-Board Mass™, OBM™, Telematics Monitoring Application™, TMA™, Road Infrastructure Management™, RIM™, Intelligent Mass Monitoring™, IMM™, Intelligent Mass Assessment™, IMA™, Intelligent Location Monitoring™ and ILM™ are trademarks of Transport Certification Australia Limited.

Transport Certification Australia Ltd

T: +61 3 8601 4600

E: tca@tca.gov.au

W: www.tca.gov.au

ABN 83 113 379 936

About Us

Transport Certification Australia (TCA) is a national organisation that provides assurance services relating to transport technologies and data to enable improved public purpose outcomes from road transport.

Priority outcome areas enabled by TCA services include improved road safety, transport efficiency, freight productivity, asset management and sustainability.

Key aspects of TCA include:

- An independent not-for-profit entity, with government oversight
- Administration of the National Telematics Framework, including its rules, specifications, agreements, digital infrastructure and other supporting services
- Assurance services that support but are appropriately separated from regulators, policy makers and enforcement activities, and underpin telematics applications and associated information and data services
- Advice that is based on evidence and a deep subject matter knowledge
- Trusted partner to both government and industry stakeholders, enabling a nationally consistent open market, with services covering all road vehicle types and associated digital infrastructure.

Contents

1	Introduction	5
	1.1 Purpose	5
	1.2 Scope	5
	1.3 Background	5
2	TMA Special Purpose Vehicle Monitoring Schemes (VIC)	7
	2.1 Participants	7
	2.2 Common Scheme Features	8
	2.3 Key Scheme Processes	10
	2.4 Roles and Responsibilities	13

Appendices

A	Acronyms and Definitions	15
B	TMA SPV Monitoring Scheme – Up to 40-Tonne SPVs (VIC)	17
C	TMA SPV Monitoring Scheme – 4-Axle SPVs Up to 48 Tonnes (VIC)	18
D	TMA SPV Monitoring Scheme – 5-Axle SPVs Up to 60 Tonnes (VIC)	19
E	TMA SPV Monitoring Scheme – 6-Axle SPVs Up to 72 Tonnes (VIC)	20
F	TMA SPV Monitoring Scheme – 7-Axle SPVs Up to 84 Tonnes (VIC)	21
G	TMA SPV Monitoring Scheme – 8-Axle SPVs Up to 96 Tonnes (VIC)	22
H	TMA SPV Monitoring Scheme – 9-Axle SPVs Up to 108 Tonnes (VIC)	23
I	TMA SPV Monitoring Scheme – Rough Terrain Mobile Cranes (VIC)	24

Important: This document describes the Telematics Monitoring Application (TMA) Special Purpose Vehicle (SPV) Monitoring Schemes (VIC) only, in the State of Victoria. Eligible vehicles may be enrolled in a TMA SPV Monitoring Scheme (VIC) and/or an Intelligent Access Program (IAP) SPV Scheme (VIC) in Victoria. This document does not provide information on IAP SPV Schemes (VIC) other than the details shown in the appendices of this document.

The Operator of each SPV has the option of enrolling individual vehicles in TMA or the IAP.

1 Introduction

1.1 Purpose

This document describes the following TMA Special Purpose Vehicle (SPV) Monitoring Schemes (VIC) associated with the TMA application:

- TMA SPV Monitoring Scheme – Up to 40-Tonne SPVs (VIC)
- TMA SPV Monitoring Scheme – 4-Axle SPVs Up to 48 Tonnes (VIC)
- TMA SPV Monitoring Scheme – 5-Axle SPVs Up to 60 Tonnes (VIC)
- TMA SPV Monitoring Scheme – 6-Axle SPVs Up to 72 Tonnes (VIC)
- TMA SPV Monitoring Scheme – 7-Axle SPVs Up to 84 Tonnes (VIC)
- TMA SPV Monitoring Scheme – 8-Axle SPVs Up to 96 Tonnes (VIC)
- TMA SPV Monitoring Scheme – 9-Axle SPVs Up to 108 Tonnes (VIC)
- TMA SPV Monitoring Scheme – Rough Terrain Mobile Cranes (VIC).

TMA SPV Monitoring Schemes (VIC) are made available by the Department of Transport (DOT), Victoria, to permit access of eligible SPVs on approved routes on the Victorian road network.

1.2 Scope

This document describes the TMA SPV Monitoring Schemes (VIC) and how they are used with the TMA application.

The following information is included:

- Scheme parameters;
- Key scheme processes; and
- Roles and responsibilities.

Note: This document does not provide information on IAP SPV Schemes (VIC) other than the details shown in the appendices.

1.3 Background

An SPV is a motor vehicle or trailer, other than an agricultural vehicle or a tow truck, built for a purpose other than carrying goods. Examples include mobile cranes, concrete pump trucks and drill rigs. An SPV that exceeds one or more of the general mass and dimension limits in the *Heavy Vehicle (Mass, Dimension and Loading) National Regulation* is a Class 1 restricted access heavy vehicle.

Not all roads and road infrastructure can safely provide access to SPVs of particular lengths and masses. This can be because of bridges that have not been built to cater for the heavier SPVs or the road geometry is not suitable for longer SPVs. As a result, eligible SPVs are monitored for parameters such as identity, date and time, location and derived speed. The approved SPV route networks are available on the DOT website.

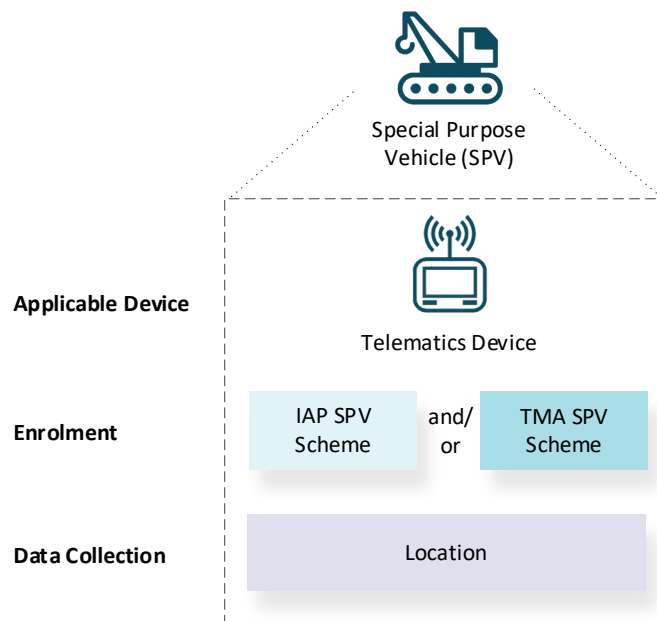
Eligible SPV categories are described in Appendices B to I, as applicable to the scheme.

Eligible vehicles may be enrolled in a TMA SPV Monitoring Scheme (VIC) and/or a related IAP SPV Scheme (VIC) (see Figure 1 and tables in applicable scheme descriptions in Appendices B to I).

If eligible vehicles are already enrolled in a related IAP SPV scheme:

- Enrolment may be cancelled in the IAP SPV Scheme and commenced in the applicable TMA SPV Monitoring Scheme (VIC); or
- Enrolment may be retained in the IAP SPV Scheme and commenced in the applicable TMA SPV Monitoring Scheme (VIC) (i.e. enrolment may be in both schemes).

Figure 1: Enrolment in TMA and/or IAP SPV Monitoring Schemes



To participate in the TMA SPV Monitoring Scheme (VIC), an Operator (e.g. a transport operator) must conform with the requirements specified within a Class 1 permit issued by the National Heavy Vehicle Regulator ("the permit"). Enrolment in the TMA application is one of the requirements that must be met by the Operator. Enrolment in the RIM application is performed by the Application Service Provider (ASP) selected by the Operator.

Data is collected from vehicles fitted with TCA-approved telematics devices.

Note: Approval may be in the form of type-approval or an equivalent approval mechanism acceptable to TCA. The ASPs must meet applicable requirements in the functional and technical specification, irrespective of the approval mechanism.

ASPs provide data to TCA. TCA analyses the data and makes reporting available to DOT and participating local councils in Victoria via the Telematics Analytics Platform (TAP).

The TMA application is offered at Level 2 Assurance appropriate to these vehicles (see Appendix A for a definition of Level 2 Assurance).

The use of the TMA application for the scheme provides network-wide movements of enrolled vehicles on the Victorian road network.

Note: The TMA application can be used for a variety of purposes. In this document, TMA is described in the context of the scheme, which has specific business requirements associated with the standard operation of the TMA application.

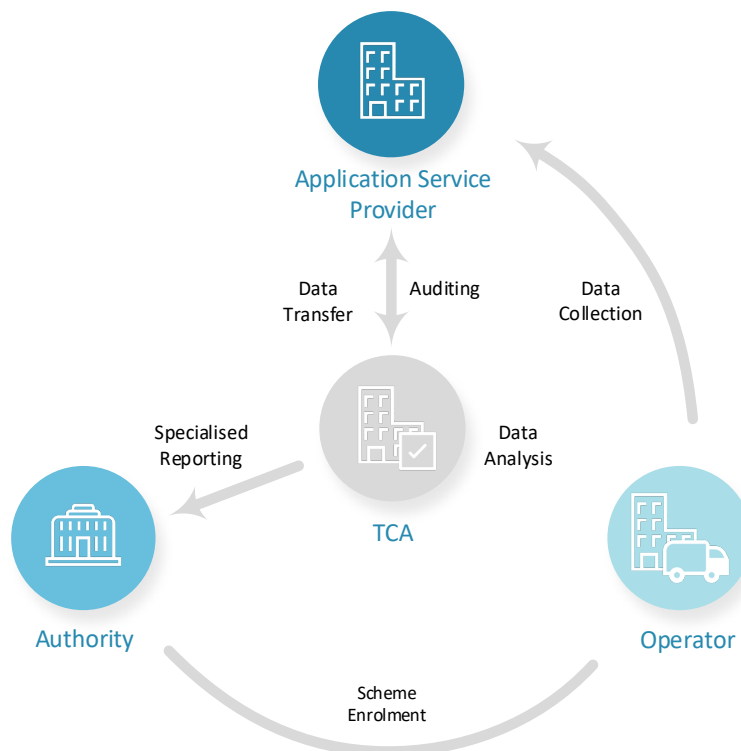
2 TMA Special Purpose Vehicle Monitoring Schemes (VIC)

2.1 Participants

Figure 2 outlines the key interactions between participants for the use of the TMA application for a TMA SPV Monitoring Scheme (VIC):

- DOT, as the Authority of the scheme, requires the monitoring, with reporting, of the Operator's vehicle(s) as a condition of the Authority allowing the Operator and its vehicle(s) to participate in the scheme. The Authority may conduct compliance activities as necessary.
- Operators are vehicle operators that agree to enrol vehicles into the scheme, and consent to their data collected through the TMA application to be used for the intended purpose (as defined by the Authority and agreed to by the Operator in the ASP–Operator Agreement).
- ASPs, certified by TCA, offer telematics services (hardware, software and associated processes) to enable enrolment of eligible vehicles in the TMA application (as well as other applications available within the National Telematics Framework [NTF]), collection of data from installed telematics devices and reporting of data to TCA.
- TCA administers the TMA application and its schemes within the NTF, ensuring that data security and privacy concerns are managed. TCA receives vehicle enrolment details from Operators via APSS, and makes ASP–Operator Agreements available to participants. TCA also receives telematics data from ASPs, performs data analysis, and makes standard and specialised reporting available to the Authority (and other bodies authorised by the Authority) via TAP as agreed between the Authority and TCA, and in accordance with the intended purpose as agreed by the Operator in the ASP–Operator Agreement.

Figure 2: Scheme Participants and Key Interactions



Note: Interactions between scheme participants are consistent with interactions between TMA application participants and are not specific to the scheme.

2.2 Common Scheme Features

This section describes the common features of TMA SPV Monitoring Schemes (VIC). For information on features that are specific to a TMA SPV Monitoring Scheme (VIC), refer to scheme descriptions in the appendices of this document.

Note: The following information is for TMA SPV Monitoring Schemes (VIC) only. This document does not provide information on IAP SPV Schemes other than the details shown in Appendices B to I.

a. ASP Certification

TCA will certify ASPs to provide services for the TMA application.

b. Enrolment

ASPs will enrol vehicles in the TMA application and a TMA SPV Monitoring Scheme (VIC) at the request of the Operator.

The ASP will manage key steps of enrolment including approval, and as necessary, cancellation and replacement.

Note: Operators are expected to be more inclined to have their vehicles monitored through the TMA application based on the Authority transparently communicating the intended use of the TMA application, and obtaining assurance and safeguards from TCA that data collected through the TMA application will not be used for other, undisclosed purposes (such as compliance and enforcement).

Figure 3 shows the pre-enrolment steps for a TMA SPV Monitoring Scheme (VIC).

Figure 4 shows the reporting processes for a TMA SPV Monitoring Scheme (VIC).

Figure 5 shows the enrolment cancellation and reporting processes for a TMA SPV Monitoring Scheme (VIC).

c. Devices and Data Collection

The device used in the TMA application is a telematics device, approved by TCA for use at Level 2 Assurance or higher.

The telematics device will collect:

- position data at 30-second intervals
- date and time data.

d. Data Reporting

The ASP shall transfer data records collected through TMA to TCA no less frequently than each calendar month, and as described in *Telematics Monitoring Application Functional and Technical Specification*.

e. Data Analysis and Reporting

TCA will make data analysis and reporting available to the Authority and participating local governments in Victoria through TAP.

Through TAP, the Authority and participating local governments in Victoria will have access to:

- interactive maps, which represent data using data elements collected as part of a TMA SPV Monitoring Scheme (VIC); and
- specific reporting required for scheme management.

Note:

- The type, number, frequency and graphical output of specific reporting will be subject to agreed terms reached between TCA and the Authority.*
- The TMA application relies on changes in vehicle position records over a 30-second period to derive vehicle speed. Average and maximum vehicle speed results are estimates only, and*

may be influenced by factors such as road geometry and GNSS quality. Authorities should exercise caution when interpreting vehicle speed derived from the TMA application.

The use of TMA for a TMA SPV Monitoring Scheme (VIC) is intended to provide a basic representation of individual and identifiable vehicle movements based on the data collected and the use of data for the intended purpose of the scheme (as agreed by the Operator in the ASP–Transport Operator Agreement).

The Authority and participating local governments in Victoria will manually review the operation of vehicles (through TAP) against the approved road network. TCA does not offer automated exception reporting to assess whether a vehicle has not met access conditions granted by the Authority.

A Scheme Participation Report will be made available to the Authority on a monthly basis via TAP. This report may include the following standard measures and dimensions as shown in Table 1.

Table 1: Scheme Participation Report

Report Content	Examples
Aggregated measures	<ul style="list-style-type: none">• Count of all vehicles enrolled in a TMA SPV Monitoring Scheme (VIC)• Count of vehicles enrolled in a TMA SPV Monitoring Scheme (VIC) that TCA received data from• Vehicles enrolled in a TMA SPV Monitoring Scheme (VIC) that TCA did not receive data from for at least 30 consecutive days <p><i>Note: Reporting of this measure will include vehicle identities. A participating vehicle will only be included in this measure if, without a satisfactory explanation, it has not provided data for at least 30 consecutive days.</i></p> <ul style="list-style-type: none">• Count of Operators with vehicles enrolled in a TMA SPV Monitoring Scheme (VIC)• Count of ASPs reporting data for vehicles enrolled in a TMA SPV Monitoring Scheme (VIC)
Dimensions	<ul style="list-style-type: none">• Operator• ASP

2.3 Key Scheme Processes

Figure 3 outlines the key actions taken by each participant during the pre-enrolment stage of the operation of a TMA SPV Monitoring Scheme (VIC).

Note:

- i) This process assumes that TCA has already certified the ASP to provide TMA application services.
- ii) The following information is for a TMA SPV Monitoring Scheme (VIC) only. This document does not provide information on IAP SPV Schemes other than the details shown in the appendices.

Figure 3: Pre-Enrolment Process

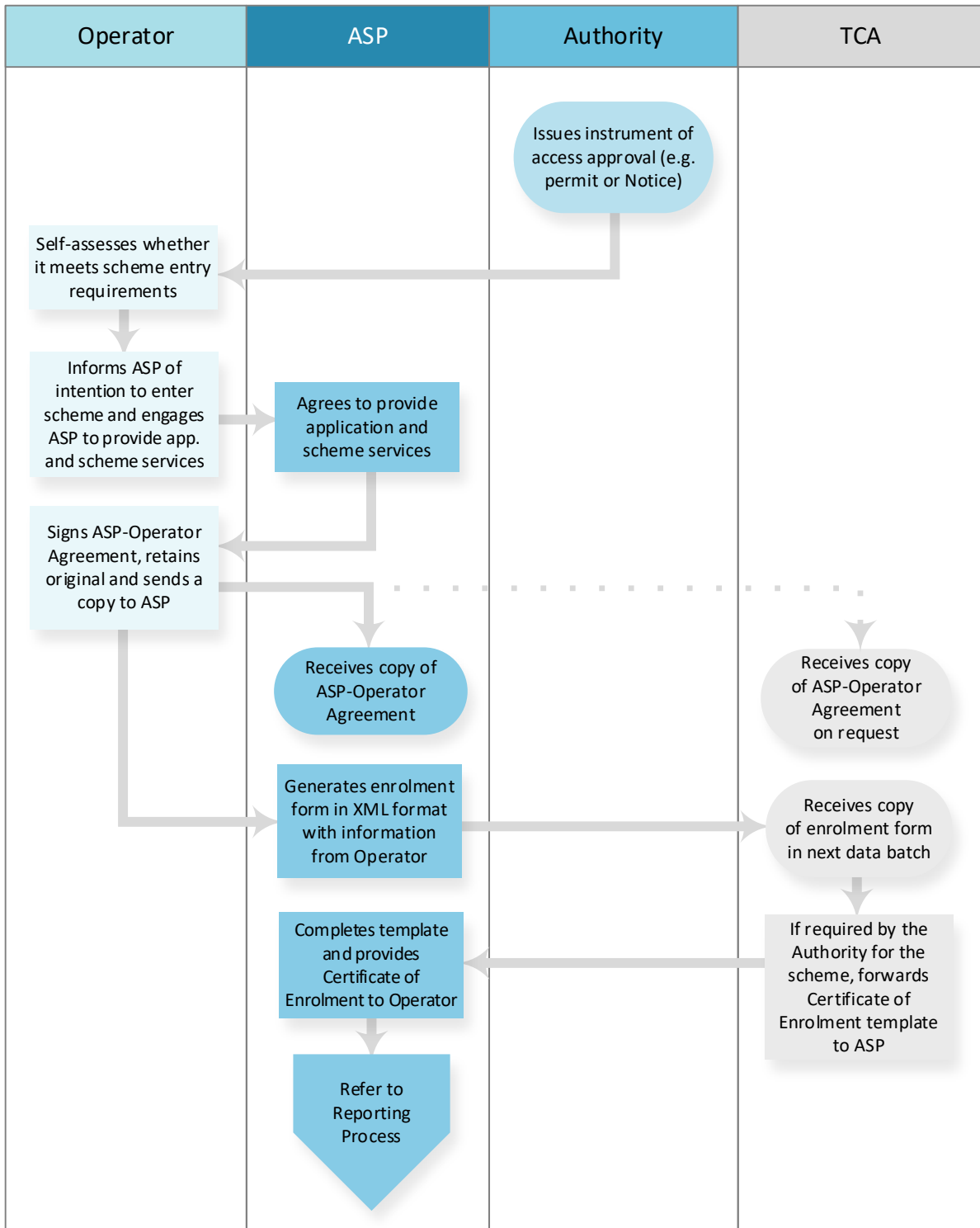
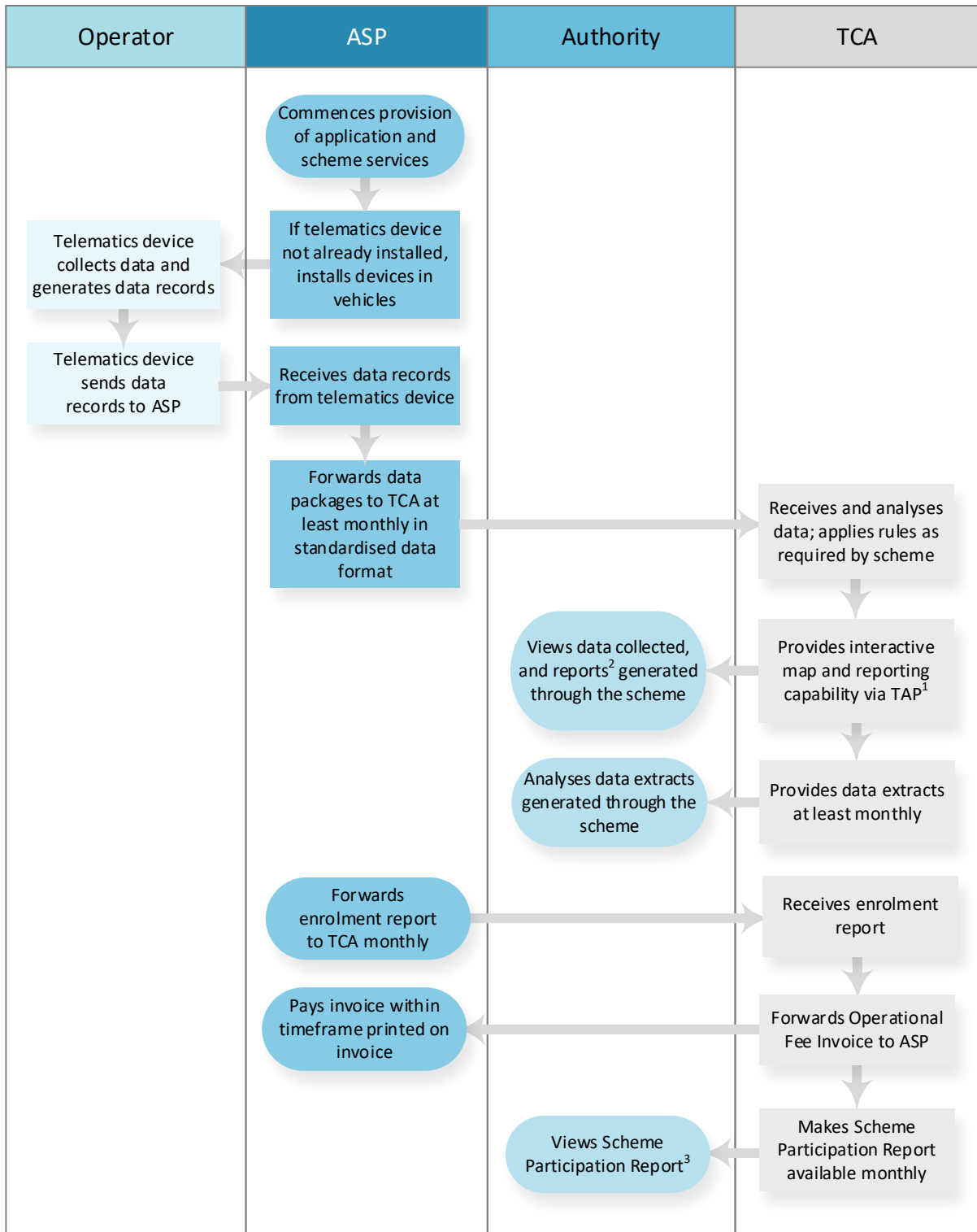


Figure 4 outlines the key actions related to data collection, record generation and reporting.

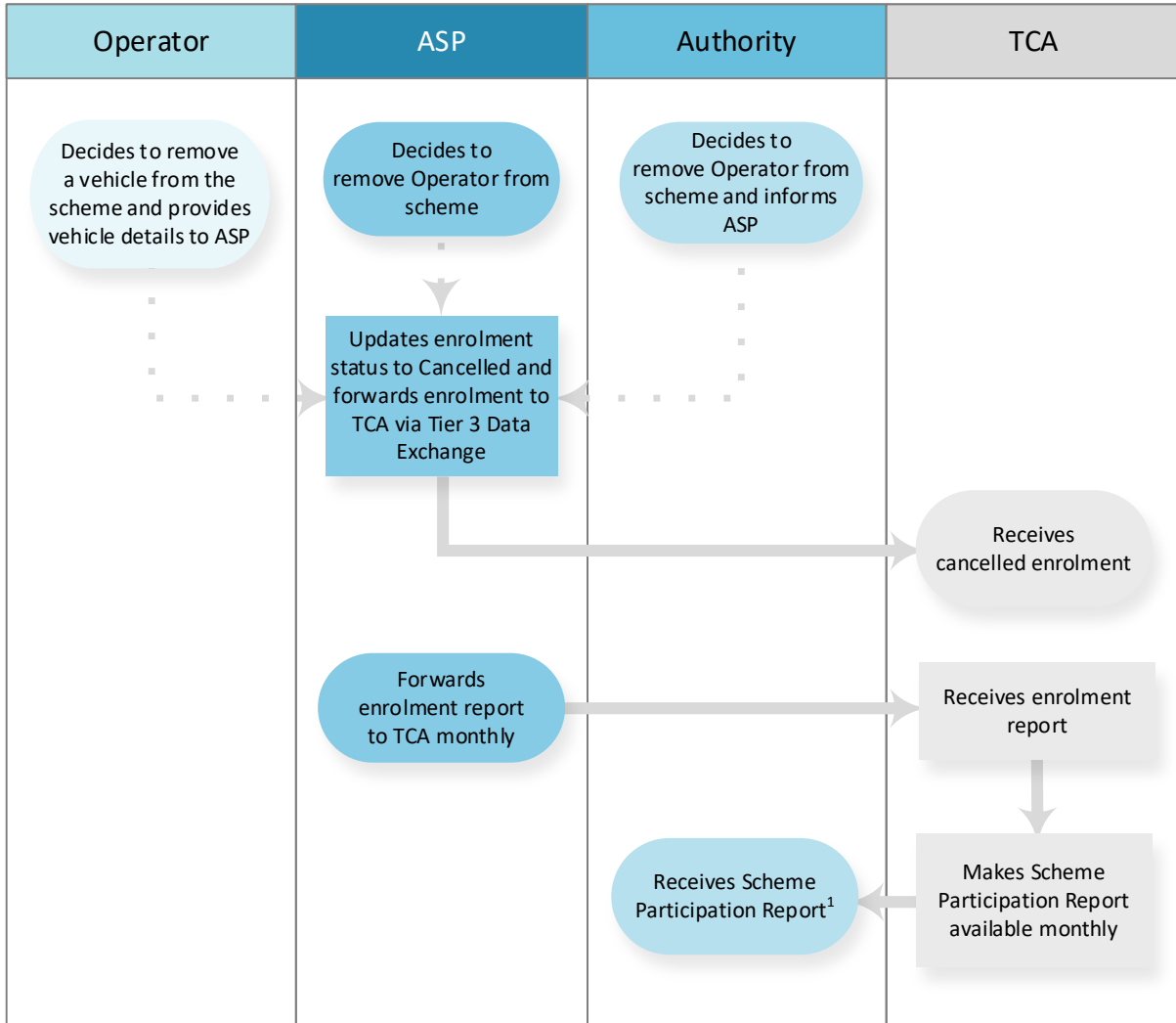
Figure 4: Reporting Processes



1. Data will be updated at least monthly.
2. The Authority will nominate the locations that will be subject to location-based reports (subject to agreed terms).
3. Local governments in Victoria may also view this information.

Cancellation of enrolment may be initiated by the Operator, the Authority or the ASP.
 Figure 5 outlines the key actions to discontinue enrolment of a vehicle.

Figure 5: Enrolment Cancellation and Reporting Processes



1. Local governments in Victoria may also view this information.

2.4 Roles and Responsibilities

Note: The following information is for a TMA SPV Monitoring Scheme (VIC) only. This document does not provide information on IAP SPV schemes other than the details shown in the appendices.

In delivering the objectives of the scheme, **TCA** will:

- Provide a document (this document) describing the use of the scheme as part of the TMA application
- Produce or maintain collateral, as necessary, to support the scheme. Examples include the provision of current versions of:
 - *Telematics Monitoring Application Functional and Technical Specification*
 - *Telematics Business-to-Business Data Exchange Functional and Technical Specification*
 - *Telematics Device Functional and Technical Specification*
- Support the reporting of data records via Tier 3 Data Exchange using a RESTful API, with these records formatted using JSON
- Support the reporting of enrolment forms and enrolment reports using a RESTful API, with these documents formatted using XML
- Inform ASPs of scheme details and entry conditions
- Produce an ASP–Operator Agreement for use with the scheme and make it available from the TCA website
- Ensure that TAP is set up to enable the Authority and participating local governments in Victoria to access reporting generated by the scheme (in accordance with the intended purpose as agreed by the Operator in the ASP–Operator Agreement), and any malfunctions associated with vehicles enrolled in the scheme
- Maintain the cloud environment and databases, etc. for receipt of data records from the TMA application
- Produce and execute an ASP–TCA Certification Agreement, which formalises the relationship between TCA and the ASP with regard to ASP certification, or update the current Agreement
- Assess and certify whether an ASP meets requirements to provide TMA services
- Approve devices used in the scheme
- Ensure the intellectual property rights of ASPs are protected when assessing whether an ASP can meet operational requirements of the scheme
- If required by the Authority, provide certified ASPs with the Certificate of Enrolment template
- At the end of each month, forward Operational Fee Invoices to ASPs upon receipt of enrolment reports
- With the ASP, monitor via TAP whether a device malfunction has been resolved within agreed timeframes
- Notify the ASP when data from an enrolled vehicle has not been received for one month, followed by the Authority if unresolved
- Provide the Authority with reporting outlined in 2.2e via TAP
- Ensure the confidentiality of ASP data is maintained
- Unless directed by the Authority and consented to by the Operator, de-identify the TMA data it has received relating to the Operator’s nominated vehicle(s) 12 months from its receipt of the data.

The Authority will:

- Maintain documentation required by the Authority for the scheme
- Undertake program coordination activities related to the scheme with TCA
- Monitor whether device malfunctions have been resolved within agreed timeframes
Note: TCA will notify the ASP when data has not been received for one month, followed by the Authority if unresolved.
- Access reporting outlined in 2.2e via TAP, and review data trends and numbers of enrolled vehicles
- Conduct compliance activities as necessary
- In conjunction with TCA, communicate scheme-related policy changes to industry and stakeholders.

ASPs will:

- Interact with TCA to establish the delivery mechanism for provision of data packages to TCA (noting that a data package includes data records, enrolment forms and enrolment reports)
- Receive notification from Operators regarding the enrolment status of vehicles, and forward this information to TCA using an agreed mechanism on a monthly basis
- Provide the ASP–Operator Agreement to an Operator once an agreement to provide services for the scheme has been made
- Be responsible for the installation, operation and maintenance of telematics devices (and any connected devices) and the reporting of data received from those devices
- If required by the Authority, provide Certificates of Enrolment to enrolled Operators, using the template received from TCA, and coordinate their removal from vehicles no longer enrolled in the scheme
- Pay Operational Fee Invoices received from TCA, generated upon receipt of enrolment reports, within the timeframe shown on the invoice
- In the event of a device malfunction: liaise with the Operator and/or device supplier to resolve the issue; report the malfunction (unidentifiable) to TCA within the required time period; monitor via TAP whether the device malfunction has been resolved within agreed timeframes; and notify TCA when the malfunction has been resolved
- Provide back-office capability to process collected data records as required by the scheme
- Deliver data records to TCA, using agreed data delivery mechanism, required data formats and meeting data reporting requirements.

Operators will:

- Access scheme rules and entry conditions on the Authority website and determine whether they meet those conditions
- Access the permit and ensure compliance with its requirements for the scheme
- Upon self-assessment that scheme entry conditions are met, notify the ASP of its intention to enrol in the scheme pilot
- Agree to share data collected by its ASP with TCA for the scheme using a signed TMA ASP–Operator Agreement
- Follow rules for enrolment in the scheme pilot
- Store original signed ASP–Operator Agreement and forward copies to the ASP and TCA (on request)
- Install telematics devices (and any connected devices) and engage an ASP to provide services for the scheme
- Notify the ASP of the date that a vehicle or the Operator will no longer participate in the scheme.

A Acronyms and Definitions

Acronyms

Acronym	Definition
API	application programming interface
ASP	Application Service Provider
FTPS	File Transfer Protocol Secure
IAP	Intelligent Access Program
NTF	National Telematics Framework
SPV	Special Purpose Vehicle
TAP	Telematics Analytics Platform
TMA	Telematics Monitoring Application
UTC	Coordinated Universal Time

Definitions

Term	Definition
application	A capability of the NTF that provides business value to stakeholders, delivered as an assembly of policy, business components and technical components, within in the context of an identified level of assurance.
Application Service Provider (ASP)	A service provider that has been certified by TCA as meeting the requirements of one of more telematics applications.
approval mechanism	The mechanism by which TCA approves a device, such as a telematics device or connected device, for use in a telematics application. The approval mechanism used may be type-approval, or an equivalent approval mechanism acceptable to TCA.
ASP–TCA Certification Agreement	The written agreement made between an ASP and TCA that recognises the fact that the ASP, having satisfied TCA’s requirements for appointment as an ASP, is appointed in that capacity, and sets out the legal obligations of each party with respect to the ongoing role of the ASP.
ASP–Transport Operator Agreement	A written agreement between an ASP, an Operator and TCA which sets out the terms on which the ASP will provide application services to the Operator, and the intended purpose for collecting data from the Operator’s vehicle(s) enrolled in the scheme.
Authority	An entity, associated with a jurisdiction, responsible for the administration of one or more NTF applications. An Authority may appoint an administrator to perform its functions. <i>See also: jurisdiction.</i>
connected device	Any device or technology connected to a telematics device.
data collection period	A whole number of days in the UTC time zone for which all application data is provided. Successive data collection periods are contiguous.

Term	Definition
data package	A package of information sent via Tier 3 Data Exchange for a data collection period.
data record	A discrete and defined set of data elements generated by a device.
enrolment	Both the process and outcome by which an Operator enters an Authority's scheme. Each vehicle must be enrolled for each scheme it participates in. Enrolment also confirms the application and conditions (if applicable) that the vehicle is monitored under.
enrolment form	An electronic document that formally and simultaneously records the enrolment of a vehicle within a scheme, and within the application required by that scheme.
enrolment report	A summary of enrolments relevant to a given Authority for a specified reporting period, including any aggregated data required by specific applications.
jurisdiction	A geographical area containing a road network (i.e. typically an Australian state or territory).
level of assurance	An assurance level that supports telematics applications, structured around the intended use of a telematics application, risks being managed, and the needs and expectations of consumers and other stakeholders.
Level 2 Assurance	Independent assessment of specific elements of a telematics application. Telematics data is combined with other data sources.
Operator	An entity that operates one or more vehicles eligible to enter a scheme.
scheme	The generic term for a specific use of an application linked to delivering a policy objective.
Special Purpose Vehicle (SPV)	A motor vehicle or trailer, other than an agricultural vehicle or a tow truck, built for a purpose other than carrying goods. Examples include mobile cranes, concrete pump trucks and drill rigs.
telematics device	The primary TCA-approved telematics unit that monitors vehicle parameters, which may include identity, datetime, location, speed, vehicle category or mass.
Tier 1 Data Exchange	A web services solution where structured information is exchanged that complies with requirements such as authentication, security, privacy and certainty of delivery. It includes exchanges of information related to a vehicle's enrolment in telematics applications, conditions and adherence to those conditions.
Tier 2 Data Exchange	The human-initiated (rather than automated) exchange of business-related information and advice. Typical exchanges via this tier include reporting of issues and resolutions, correspondence regarding certification and re-certification, advice regarding information and communications technology (ICT), data assurance and other reporting.
Tier 3 Data Exchange	The packaging and delivery of data packages, comprising data records and enrolment-related artefacts. Data packages have several uses which include data analysis by the recipient, data assurance, and for research purposes.

B TMA SPV Monitoring Scheme – Up to 40-Tonne SPVs (VIC)

Purpose

The *TMA SPV Monitoring Scheme – Up to 40-Tonne SPVs (VIC)* is a scheme administered by DOT to monitor road utilisation of SPVs up to 40 tonnes operating under the applicable permit on approved routes on the Victorian road network.

Background

To participate in the scheme, Operators must conform with the requirements specified within the applicable permit. Eligible DOT vehicle categories for the scheme include the following, and must be fitted with a telematics device:

- 2-axle pick and carry crane up to 40 t
- 2- to 3-axle crane up to 40 t with forward projection exceeding General Notice requirements
- Truck-mounted crane up to 40 t
- Concrete pump truck up to 40 t.

DOT monitors vehicles enrolled in the scheme on routes as described in the applicable permit and indicated on network maps available on the DOT website.

Scheme Features

Through TAP, the Authority and participating local governments in Victoria will have access to specific reporting that includes road utilisation of SPVs up to 40 tonnes on the Victorian road network.

Other aspects of this scheme operate in accordance with generic TMA SPV Monitoring (VIC) processes, such as ASP Certification, Enrolment, Data Reporting, and Data Analysis and Reports. For more information, see 2.2.

Refer to the following when entering values into data elements for Scheme or Authority Code – for example, in an enrolment report or enrolment form.

Table B.1: TMA Scheme Name and Authority Code

Scheme Name (full)	Scheme Data Element Value (e.g. for enrolment form or report)	Authority Code Data Element Value
TMA SPV Monitoring Scheme – Up to 40-Tonne SPVs (VIC)	TMASPV40T	VIC

For the related IAP scheme (which is referred to by the term ‘IAP Application’), refer to the following when entering values into business documents such as intelligent access conditions (IACs) and participation reports (PRs).

Table B.2: IAP Scheme Name and Authority Code

Scheme Name (full)	IAP Application Name Data Element Value	Off-the Shelf Conditions ID	Authority Code Data Element Value
IAP SPV Scheme – Up to 40-Tonne SPVs (VIC)	Special Purpose Vehicles	VIC_CT2CR	VIC

C TMA SPV Monitoring Scheme – 4-Axle SPVs Up to 48 Tonnes (VIC)

Purpose

The *TMA SPV Monitoring Scheme – 4-Axle SPVs Up to 48 Tonnes (VIC)* is a scheme administered by DOT to monitor road utilisation of 4-axle SPVs up to 48 tonnes operating under the applicable permit on approved routes on the Victorian road network.

Background

To participate in the scheme, Operators must conform with the requirements specified within the applicable permit. Four-axle all-terrain SPVs up to 48 tonnes may be enrolled in the scheme, and must be fitted with a telematics device.

DOT monitors vehicles enrolled in the scheme on routes as described in the applicable permit and indicated on network maps available on the DOT website.

Scheme Features

Through TAP, the Authority and participating local governments in Victoria will have access to specific reporting that includes road utilisation of 4-axle SPVs up to 48 tonnes on the Victorian road network.

Other aspects of this scheme operate in accordance with generic TMA SPV Monitoring (VIC) processes, such as ASP Certification, Enrolment, Data Reporting, and Data Analysis and Reports. For more information, see 2.2.

Refer to the following when entering values into data elements for Scheme or Authority Code – for example, in an enrolment report or enrolment form.

Table C.1: TMA Scheme Name and Authority Code

Scheme Name (full)	Scheme Data Element Value (e.g. for enrolment form or report)	Authority Code Data Element Value
TMA SPV Monitoring Scheme – 4-Axle SPVs Up to 48 Tonnes (VIC)	TMASPV48T	VIC

For the related IAP scheme (which is referred to by the term ‘IAP Application’), refer to the following when entering values into business documents such as intelligent access conditions (IACs) and participation reports (PRs).

Table C.2: IAP Scheme Name and Authority Code

Scheme Name (full)	IAP Application Name Data Element Value	Off-the Shelf Conditions ID	Authority Code Data Element Value
IAP SPV Scheme – 4-Axle SPVs Up to 48 Tonnes (VIC)	Special Purpose Vehicles	VIC_48TCR	VIC

D TMA SPV Monitoring Scheme – 5-Axle SPVs Up to 60 Tonnes (VIC)

Purpose

The *TMA SPV Monitoring Scheme – 5-Axle SPVs Up to 60 Tonnes (VIC)* is a scheme administered by DOT to monitor road utilisation of 5-axle SPVs up to 60 tonnes operating under the applicable permit on approved routes on the Victorian road network.

Background

To participate in the scheme, Operators must conform with the requirements specified within the applicable permit. Five-axle all-terrain SPVs up to 60 tonnes may be enrolled in the scheme, and must be fitted with a telematics device.

DOT monitors vehicles enrolled in the scheme on routes as described in the applicable permit and indicated on network maps available on the DOT website.

Scheme Features

Through TAP, the Authority and participating local governments in Victoria will have access to specific reporting that includes road utilisation of 5-axle SPVs up to 60 tonnes on the Victorian road network.

Other aspects of this scheme operate in accordance with generic TMA SPV Monitoring (VIC) processes, such as ASP Certification, Enrolment, Data Reporting, and Data Analysis and Reports. For more information, see 2.2.

Refer to the following when entering values into data elements for Scheme or Authority Code – for example, in an enrolment report or enrolment form.

Table D.1: TMA Scheme Name and Authority Code

Scheme Name (full)	Scheme Data Element Value (e.g. for enrolment form or report)	Authority Code Data Element Value
TMA SPV Monitoring Scheme – 5-Axle SPVs Up to 60 Tonnes (VIC)	TMASPV60T	VIC

For the related IAP scheme (which is referred to by the term ‘IAP Application’), refer to the following when entering values into business documents such as intelligent access conditions (IACs) and participation reports (PRs).

Table D.2: IAP Scheme Name and Authority Code

Scheme Name (full)	IAP Application Name Data Element Value	Off-the Shelf Conditions ID	Authority Code Data Element Value
IAP SPV Scheme – 5-Axle SPVs Up to 60 Tonnes (VIC)	Special Purpose Vehicles	VIC_60TCR	VIC

E TMA SPV Monitoring Scheme – 6-Axle SPVs Up to 72 Tonnes (VIC)

Purpose

The *TMA SPV Monitoring Scheme – 6-Axle SPVs Up to 72 Tonnes (VIC)* is a scheme administered by DOT to monitor road utilisation of 6-Axle SPVs up to 72 tonnes operating under the applicable permit on approved routes on the Victorian road network.

Background

To participate in the scheme, Operators must conform with the requirements specified within the applicable permit. Six-axle SPVs up to 72 tonnes may be enrolled in the scheme, and must be fitted with a telematics device.

DOT monitors vehicles enrolled in the scheme on routes as described in the applicable permit and indicated on network maps available on the DOT website.

Scheme Features

Through TAP, the Authority and participating local governments in Victoria will have access to specific reporting that includes road utilisation of 6-axle SPVs up to 72 tonnes on the Victorian road network.

Other aspects of this scheme operate in accordance with generic TMA SPV Monitoring (VIC) processes, such as ASP Certification, Enrolment, Data Reporting, and Data Analysis and Reports. For more information, see 2.2.

Refer to the following when entering values into data elements for Scheme or Authority Code – for example, in an enrolment report or enrolment form.

Table E.1: TMA Scheme Name and Authority Code

Scheme Name (full)	Scheme Data Element Value (e.g. for enrolment form or report)	Authority Code Data Element Value
TMA SPV Monitoring Scheme – 6-Axle SPVs Up to 72 Tonnes (VIC)	TMASPV72T	VIC

For the related IAP scheme (which is referred to by the term ‘IAP Application’), refer to the following when entering values into business documents such as intelligent access conditions (IACs) and participation reports (PRs).

Table E.2: IAP Scheme Name and Authority Code

Scheme Name (full)	IAP Application Name Data Element Value	Off-the Shelf Conditions ID	Authority Code Data Element Value
IAP SPV Scheme – 6- to 9-Axle SPVs Up to 108 Tonnes (VIC)	Special Purpose Vehicles	VIC_00TCR	VIC

F TMA SPV Monitoring Scheme – 7-Axle SPVs Up to 84 Tonnes (VIC)

Purpose

The *TMA SPV Monitoring Scheme – 7-Axle SPVs Up to 84 Tonnes (VIC)* is a scheme administered by DOT to monitor road utilisation of 7-Axle SPVs up to 84 tonnes operating under the applicable permit on approved routes on the Victorian road network.

Background

To participate in the scheme, Operators must conform with the requirements specified within the applicable permit. Seven-axle SPVs up to 84 tonnes may be enrolled in the scheme, and must be fitted with a telematics device.

DOT monitors vehicles enrolled in the scheme on routes as described in the applicable permit and indicated on network maps available on the DOT website.

Scheme Features

Through TAP, the Authority and participating local governments in Victoria will have access to specific reporting that includes road utilisation of 7-axle SPVs up to 84 tonnes on the Victorian road network.

Other aspects of this scheme operate in accordance with generic TMA SPV Monitoring (VIC) processes, such as ASP Certification, Enrolment, Data Reporting, and Data Analysis and Reports. For more information, see 2.2.

Refer to the following when entering values into data elements for Scheme or Authority Code – for example, in an enrolment report or enrolment form.

Table F.1: TMA Scheme Name and Authority Code

Scheme Name (full)	Scheme Data Element Value (e.g. for enrolment form or report)	Authority Code Data Element Value
TMA SPV Monitoring Scheme – 7-Axle SPVs Up to 84 Tonnes (VIC)	TMASPV84T	VIC

For the related IAP scheme (which is referred to by the term 'IAP Application'), refer to the following when entering values into business documents such as intelligent access conditions (IACs) and participation reports (PRs).

Table F.2: IAP Scheme Name and Authority Code

Scheme Name (full)	IAP Application Name Data Element Value	Off-the Shelf Conditions ID	Authority Code Data Element Value
IAP SPV Scheme – 6- to 9-Axle SPVs Up to 108 Tonnes (VIC)	Special Purpose Vehicles	VIC_00TCR	VIC

G TMA SPV Monitoring Scheme – 8-Axle SPVs Up to 96 Tonnes (VIC)

Purpose

The *TMA SPV Monitoring Scheme – 8-Axle SPVs Up to 96 Tonnes (VIC)* is a scheme administered by DOT to monitor road utilisation of 8-Axle SPVs up to 96 tonnes operating under the applicable permit on approved routes on the Victorian road network.

Background

To participate in the scheme, Operators must conform with the requirements specified within the applicable permit. Eight-axle SPVs up to 96 tonnes may be enrolled in the scheme, and must be fitted with a telematics device.

DOT monitors vehicles enrolled in the scheme on routes as described in the applicable permit and indicated on network maps available on the DOT website.

Scheme Features

Through TAP, the Authority and participating local governments in Victoria will have access to specific reporting that includes road utilisation of 8-axle SPVs up to 96 tonnes on the Victorian road network.

Other aspects of this scheme operate in accordance with generic TMA SPV Monitoring (VIC) processes, such as ASP Certification, Enrolment, Data Reporting, and Data Analysis and Reports. For more information, see 2.2.

Refer to the following when entering values into data elements for Scheme or Authority Code – for example, in an enrolment report or enrolment form.

Table G.1: TMA Scheme Name and Authority Code

Scheme Name (full)	Scheme Data Element Value (e.g. for enrolment form or report)	Authority Code Data Element Value
TMA SPV Monitoring Scheme – 8-Axle SPVs Up to 96 Tonnes (VIC)	TMASPV96T	VIC

For the related IAP scheme (which is referred to by the term 'IAP Application'), refer to the following when entering values into business documents such as intelligent access conditions (IACs) and participation reports (PRs).

Table G.2: IAP Scheme Name and Authority Code

Scheme Name (full)	IAP Application Name Data Element Value	Off-the Shelf Conditions ID	Authority Code Data Element Value
IAP SPV Scheme – 6- to 9-Axle SPVs Up to 108 Tonnes (VIC)	Special Purpose Vehicles	VIC_00TCR	VIC

H TMA SPV Monitoring Scheme – 9-Axle SPVs Up to 108 Tonnes (VIC)

Purpose

The *TMA SPV Monitoring Scheme – 9-Axle SPVs Up to 108 Tonnes (VIC)* is a scheme administered by DOT to monitor road utilisation of 9-Axle SPVs up to 108 tonnes operating under the applicable permit on approved routes on the Victorian road network.

Background

To participate in the scheme, Operators must conform with the requirements specified within the applicable permit. Nine-axle SPVs up to 108 tonnes may be enrolled in the scheme, and must be fitted with a telematics device.

DOT monitors vehicles enrolled in the scheme on routes as described in the applicable permit and indicated on network maps available on the DOT website.

Scheme Features

Through TAP, the Authority and participating local governments in Victoria will have access to specific reporting that includes road utilisation of 9-axle SPVs up to 108 tonnes on the Victorian road network.

Other aspects of this scheme operate in accordance with generic TMA SPV Monitoring (VIC) processes, such as ASP Certification, Enrolment, Data Reporting, and Data Analysis and Reports. For more information, see 2.2.

Refer to the following when entering values into data elements for Scheme or Authority Code – for example, in an enrolment report or enrolment form.

Table H.1: TMA Scheme Name and Authority Code

Scheme Name (full)	Scheme Data Element Value (e.g. for enrolment form or report)	Authority Code Data Element Value
TMA SPV Monitoring Scheme – 9-Axle SPVs Up to 108 Tonnes (VIC)	TMASPV108T	VIC

For the related IAP scheme (which is referred to by the term 'IAP Application'), refer to the following when entering values into business documents such as intelligent access conditions (IACs) and participation reports (PRs).

Table H.2: IAP Scheme Name and Authority Code

Scheme Name (full)	IAP Application Name Data Element Value	Off-the Shelf Conditions ID	Authority Code Data Element Value
IAP SPV Scheme – 6- to 9-Axle SPVs Up to 108 Tonnes (VIC)	Special Purpose Vehicles	VIC_00TCR	VIC

I TMA SPV Monitoring Scheme – Rough Terrain Mobile Cranes (VIC)

Purpose

The *TMA SPV Monitoring Scheme – Rough Terrain Mobile Cranes (VIC)* is a scheme administered by DOT to monitor road utilisation of rough terrain mobile cranes operating under the applicable permit on approved routes on the Victorian road network.

Background

To participate in the scheme, Operators must conform with the requirements specified within the applicable permit. Rough terrain mobile cranes may be enrolled in the scheme, and must be fitted with a telematics device.

DOT monitors vehicles enrolled in the scheme on routes as described in the applicable permit and indicated on network maps available on the DOT website.

Scheme Features

Through TAP, the Authority and participating local governments in Victoria will have access to specific reporting that includes road utilisation of rough terrain mobile cranes on the Victorian road network.

Other aspects of this scheme operate in accordance with generic TMA SPV Monitoring (VIC) processes, such as ASP Certification, Enrolment, Data Reporting, and Data Analysis and Reports. For more information, see 2.2.

Refer to the following when entering values into data elements for Scheme or Authority Code – for example, in an enrolment report or enrolment form.

Table I.1: TMA Scheme Name and Authority Code

Scheme Name (full)	Scheme Data Element Value (e.g. for enrolment form or report)	Authority Code Data Element Value
TMA SPV Monitoring Scheme – Rough Terrain Mobile Cranes (VIC)	TMASPVRTMC	VIC

For the related IAP scheme (which is referred to by the term 'IAP Application'), refer to the following when entering values into business documents such as intelligent access conditions (IACs) and participation reports (PRs).

Table I.2: IAP Scheme Name and Authority Code

Scheme Name (full)	IAP Application Name Data Element Value	Off-the Shelf Conditions ID	Authority Code Data Element Value
IAP SPV Scheme – Rough Terrain Mobile Cranes (1) (VIC)	Special Purpose Vehicles	VIC_HMC00001	VIC
IAP SPV Scheme – Rough Terrain Mobile Cranes (2) (VIC)	Special Purpose Vehicles	VIC_HMC00002	VIC

Note: Schemes (1) and (2) in the table above refer to specific routes within Victoria. See DOT for more details on the routes of these schemes.



Contact

Transport Certification Australia
Level 6, 333 Queen Street
Melbourne VIC 3000

Phone: + 61 3 8601 4600
Email: tca@tca.gov.au
Website: www.tca.gov.au
