

---

# TMA Special Purpose Vehicle Monitoring Schemes (QLD)



---

**Schemes using the Telematics Monitoring Application  
(TMA) for the Department of Transport and Main Roads,  
Queensland**

**June 2026**

---

Title	TMA Special Purpose Vehicle Monitoring Schemes (QLD)
Document No.	TCA-SR44
Version	1.1
Date	June 2026
Status	Published

© Transport Certification Australia Limited 2026.

This document has been published by Transport Certification Australia Limited.

This document is copyright. Apart from any use as permitted under the Copyright Act 1968, no part may be reproduced by any person or process without the prior written permission of Transport Certification Australia Limited.

Transport Certification Australia Limited believes this publication to be correct at time of printing and does not accept responsibility for any consequences arising from the use of information herein. Readers should rely on their own skills and judgment to apply information to particular issues.

TCA™, Transport Certification Australia™, National Telematics Framework™, TCA Certified™, TCA Type-Approved™, Intelligent Access Program™, IAP®, IAP Service Provider™, IAP-SP™, In-Vehicle Unit™, IVU™, On-Board Mass™, OBM™, Telematics Monitoring Application™, TMA™, Road Infrastructure Management™, RIM™, Intelligent Mass Monitoring™, IMM™, Intelligent Mass Assessment™, IMA™, Intelligent Location Monitoring™ and ILM™ are trademarks of Transport Certification Australia Limited.

Transport Certification Australia Ltd

T: +61 3 8601 4600

E: [tca@tca.gov.au](mailto:tca@tca.gov.au)

W: [www.tca.gov.au](http://www.tca.gov.au)

ABN 83 113 379 936

---

## About Us

Transport Certification Australia (TCA) is a centre of excellence within Austroads, responsible for assessing and recognising telematics and other vehicle-based technologies. Through its administration of the National Telematics Framework, TCA helps Australian and New Zealand transport agencies collect data from vehicles in ways that are trusted by government and industry, and to provide data and analytical services that enable improved road outcomes.

---

## Contents

<b>1</b>	<b>Introduction</b>	<b>5</b>
1.1	Purpose	5
1.2	Scope	5
1.3	Background	5
<b>2</b>	<b>TMA Special Purpose Vehicle Monitoring Schemes (QLD)</b>	<b>7</b>
2.1	Participants	7
2.2	Common Scheme Features	9
2.3	Key Scheme Processes	11
2.4	Roles and Responsibilities	14

## Appendices

<b>A</b>	<b>Acronyms and Definitions</b>	<b>17</b>
<b>B</b>	<b>TMA Crane SPV Monitoring Scheme (QLD)</b>	<b>20</b>
<b>C</b>	<b>TMA Non-Crane SPV Monitoring Scheme (QLD)</b>	<b>21</b>
<b>D</b>	<b>IAP Scheme Reference</b>	<b>22</b>

---

# 1 Introduction

## 1.1 Purpose

This document describes the TMA Special Purpose Vehicle (SPV) Monitoring Schemes (QLD), which are made available by the Department of Transport and Main Roads (TMR), Queensland. The following schemes are associated with the Telematics Monitoring Application (TMA):

- TMA Crane SPV Monitoring Scheme (QLD)
- TMA Non-Crane SPV Monitoring Scheme (QLD).

The TMA SPV Monitoring Schemes (QLD) will enable monitoring of eligible SPVs on approved routes and structures on the Queensland road network.

## 1.2 Scope

This document describes the TMA SPV Monitoring Schemes (QLD) and how they are used with the TMA application.

The following information is included:

- Common scheme features
- Key scheme processes
- Roles and responsibilities of scheme participants
- Scheme descriptions in appendices.

*Note: This document does not provide information on IAP SPV Monitoring Schemes (QLD) other than the reference information shown in Appendix D.*

## 1.3 Background

An SPV is a motor vehicle or trailer, other than an agricultural vehicle or a tow truck, built for a purpose other than carrying goods. Examples in Queensland include mobile cranes, concrete pump trucks, drill rigs, and amusement rides. An SPV that exceeds one or more of the general mass and dimension limits in the *Heavy Vehicle (Mass, Dimension and Loading) National Regulation* is a Class 1 restricted access heavy vehicle.

Not all roads and road infrastructure can safely provide access to SPVs of particular dimensions and masses. This can be because of bridges that have not been built to cater for the heavier SPVs or the road geometry is not suitable for longer or wider SPVs.

Eligible SPV categories are described in scheme descriptions in the appendices of this document, as applicable to the scheme.

To participate in a TMA SPV Monitoring Scheme (QLD), a transport operator ('Operator') must conform with the requirements specified within the instrument of access approval, which is a Class 1 permit issued by the National Heavy Vehicle Regulator. The instrument of access approval authorises the use of eligible SPVs on stated routes and structures on the Queensland road network.

Enrolment in the TMA application is performed by the certified Application Service Provider (ASP) selected by the Operator<sup>1</sup>.

The ASP is responsible for the installation of a TCA-approved<sup>2</sup> telematics device and user interface<sup>3</sup> in the vehicle being utilised in accordance with the instrument of access approval. If self-declaration is required (see 2.2c) the ASP is also responsible for providing a TCA-approved user interface.

---

<sup>1</sup> The Operator may be eligible to perform the role of ASP in full or part, subject to the approval of TCA.

<sup>2</sup> TCA approval of a telematics device may be in the form of type-approval or an equivalent approval mechanism acceptable to TCA. ASPs must meet applicable requirements in the functional and technical specification, irrespective of the approval mechanism.

<sup>3</sup> Vehicle configuration may be self-declared in a user interface installed in the vehicle, or alternatively via a user interface associated with the ASP System. The user interface must be TCA-approved in either case.

---

The ASP is responsible for the collection of data from vehicles enrolled in accordance with the requirements of the TMA application for the scheme.

ASPs provide data records to TCA. TCA analyses the data and makes reporting<sup>4</sup> available to individuals authorised by TMR (and TCA as applicable) to access data of this scheme ('Authorised Data Users') in accordance with its data security policy, via

- The standard reporting dashboard of the Telematics Analytics Platform (TAP) that is made available to Authorised Data Users permitted to view de-identified scheme data
- A stream of processed scheme data that is made available to Authorised Data Users permitted to view identifiable scheme data for the intended purpose.

The TMA application<sup>5</sup> is offered at Level 2 Assurance appropriate to these vehicles (see Appendix A for a definition of Level 2 Assurance).

---

<sup>4</sup> Hereon, 'reporting' means the TAP visualisations and stream of processed data that TCA will make available to Authorised Data Users at TMR – see 2.2e for detail.

<sup>5</sup> The TMA application can be used for a variety of purposes. In this document, TMA is described in the context of the schemes, which have specific business requirements associated with the standard operation of the TMA application.

---

## 2 TMA Special Purpose Vehicle Monitoring Schemes (QLD)

### 2.1 Participants

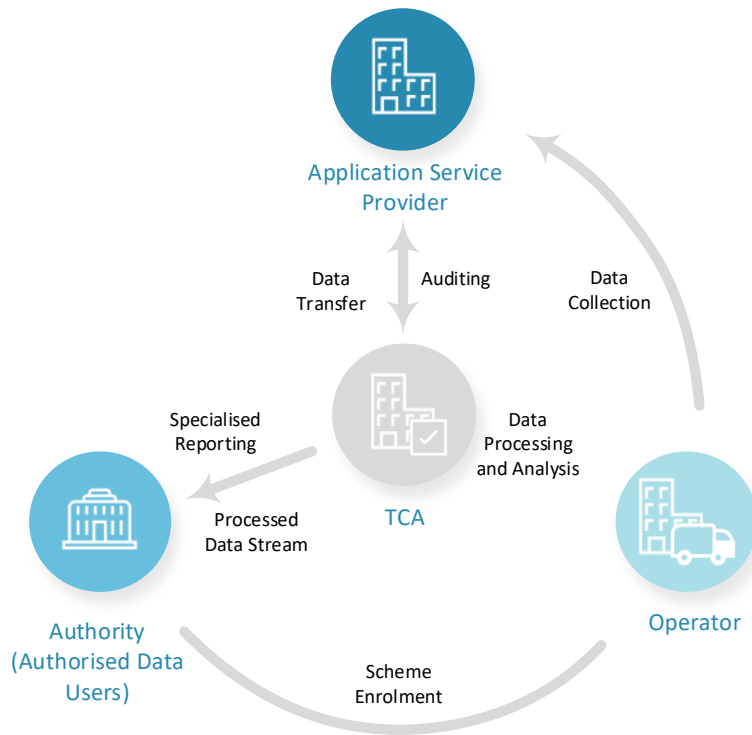
Figure 1 outlines the key interactions between participants for the use of the TMA application for a TMA SPV Monitoring Scheme (QLD):

- TMR, as the Authority of the scheme, requires the monitoring, with reporting, of the Operator's vehicle(s) as a condition of the Authority allowing the Operator and its vehicle(s) to participate in the scheme. The Authority may conduct asset management<sup>6</sup> activities, which will not include compliance or enforcement activities. The Authority determines levels of access to de-identified or identifiable data in accordance with its data security policy. At the highest level of access, Authorised Data Users will have access to identifiable data.
- Operators are vehicle operators that agree to enrol vehicles into the scheme, and consent to their data collected through the TMA application to be used for the intended purpose (as defined by the Authority and agreed to by the Operator in the ASP–Operator–Authority Agreement, the *ASP Consent Agreement for TMA Class 1 Heavy Vehicle Access Regime Schemes [QLD]*).
- ASPs, certified by TCA, offer telematics services (hardware, software and associated processes) to enable enrolment of eligible vehicles in the TMA application (as well as other applications available within the National Telematics Framework [NTF]), collection of data from installed telematics devices and reporting of data to TCA.
- TCA administers the TMA application and its schemes within the NTF, ensuring that data security and privacy concerns are managed. TCA receives vehicle enrolment details from Operators via ASPs, and makes ASP–Operator Agreements or ASP–Operator–Authority Agreements available to participants. TCA also receives telematics data from ASPs, performs data analysis, makes standard reporting of de-identified data available to Authorised Data Users permitted to view de-identified scheme data via TAP, and makes specialised reporting of identifiable data available to Authorised Data Users permitted to view identifiable scheme data as agreed between the Authority and TCA, and in accordance with the intended purpose as agreed by the Operator in the ASP–Operator–Authority Agreement.

---

<sup>6</sup> See Definitions in Appendix A for the definition of asset management activities.

**Figure 1: Scheme Participants and Key Interactions**



*Note: Interactions between scheme participants are consistent with interactions between TMA application participants and are not specific to the scheme.*

---

## 2.2 Common Scheme Features

This section describes the common features of a TMA SPV Monitoring Scheme (QLD). For information on features that are specific to a TMA SPV Monitoring Scheme (QLD), refer to the scheme descriptions in the appendices of this document.

*Note: The following information is for TMA SPV Monitoring Schemes (QLD) only. This document does not provide information on IAP SPV Monitoring Schemes (QLD) other than the reference information shown in Appendix D.*

a. ASP Certification

TCA will certify ASPs to provide services for the TMA application.

b. Enrolment

ASPs will enrol vehicles in the TMA application and a TMA SPV Monitoring Scheme (QLD) at the request of the Operator.

The ASP will manage key steps of enrolment including approval, and as necessary, cancellation and replacement.

Figure 2 shows the pre-enrolment steps for a TMA SPV Monitoring Scheme (QLD).

Figure 3 shows the reporting processes for a TMA SPV Monitoring Scheme (QLD).

Figure 4 shows the enrolment cancellation and reporting processes for a TMA SPV Monitoring Scheme (QLD).

c. Devices and Data Collection

The primary device used in the TMA application is a telematics device, approved by TCA for use at Level 2 Assurance or higher.

The telematics device will collect:

- Position data at 30-second intervals; and
- Date and time data.

The following information may be self-declared through a user interface provided by the ASP:

- Vehicle configuration data; and
- Mass data (optional).

Self-declaration of vehicle configuration or mass is not required for SPVs that are not able to change configuration.

***Important:** For eligible SPVs in Queensland, the Authority will commence a transition period from 1 July 2026 until 31 December 2026 such that:*

- *From 1 July 2026, any new enrolments of eligible SPVs must be in these schemes of the TMA application only. From this date, eligible SPVs must not enrol in a related Intelligent Access Program (IAP) scheme.*
- *If an eligible SPV was enrolled in a related IAP SPV scheme before 1 July 2026, it may continue its enrolment until 31 December 2026. Enrolment may be cancelled in the IAP scheme and commenced in this scheme of the TMA application if eligibility criteria are met.*

d. Data Reporting

The ASP shall transfer data records collected through TMA to TCA no less frequently than each week, and as described in *Telematics Monitoring Application Functional and Technical Specification*.

e. Data Analysis and Reporting to the Authority

---

TCA will make data analysis and reporting available through:

- A standard TAP dashboard that is made available to Authorised Data Users permitted to view de-identified scheme data. Through TAP, Authorised Data Users at this level will have access to interactive maps, which represent data using data elements collected as part of the scheme.
- A stream of processed scheme data that is made available to Authorised Data Users permitted to view identifiable scheme data for the intended purpose.

*Note:*

- (i) *The type and composition of specialised reporting of processed data to the Authority will be subject to agreed terms reached between TCA and the Authority. For example, data will be associated with either the vehicle identification number (VIN), or registration number plus state of registration, or all three identifiers.*

*Processed scheme data will be reported to the Authority on a weekly basis once solution design and requirements have been captured and costing has been agreed between TCA and the Authority.*

- (ii) *The TMA application relies on changes in vehicle position records over a 30-second period to derive vehicle speed. Average and maximum vehicle speed results are estimates only, and may be influenced by factors such as road geometry and Global Navigation Satellite System (GNSS) quality. Authorities should exercise caution when interpreting vehicle speed derived from the TMA application.*

The use of TMA for a TMA SPV Monitoring Scheme (QLD) is intended to provide a basic representation of vehicle movements based on the data collected and the use of data for the intended purpose of the scheme (as agreed by the Operator in the ASP–Operator–Authority Agreement).

A Scheme Participation Report will be made available to the Authority on a monthly basis via TAP. This report may include the following standard measures and dimensions as shown in Table 1.

**Table 1: Scheme Participation Report**

<b>Examples</b>
<ul style="list-style-type: none"><li>• Count of all vehicles enrolled in a TMA SPV Monitoring Scheme (QLD)</li><li>• Count of vehicles enrolled in a TMA SPV Monitoring Scheme (QLD) that TCA received data from</li><li>• Vehicles enrolled in a TMA SPV Monitoring Scheme (QLD) that TCA did not receive data from for at least 30 consecutive days</li></ul> <p><i>Note: Reporting of this measure will include vehicle identities. A participating vehicle will only be included in this measure if, without a satisfactory explanation, it has not provided data for at least 30 consecutive days.</i></p> <ul style="list-style-type: none"><li>• Count of Operators with vehicles enrolled in a TMA SPV Monitoring Scheme (QLD)</li><li>• Count of ASPs reporting data for vehicles enrolled in a TMA SPV Monitoring Scheme (QLD)</li></ul>

## 2.3 Key Scheme Processes

Figure 2 outlines the key actions taken by each participant during the pre-enrolment stage of the operation of a TMA SPV Monitoring Scheme (QLD).

Note:

- (i) This process assumes that TCA has already certified the ASP to provide TMA application services.
- (ii) The following information is for TMA SPV Monitoring Schemes (QLD) only. This document does not provide information on IAP SPV Monitoring Schemes (QLD) other than the reference information shown in Appendix D.

**Figure 2: Pre-Enrolment Process**

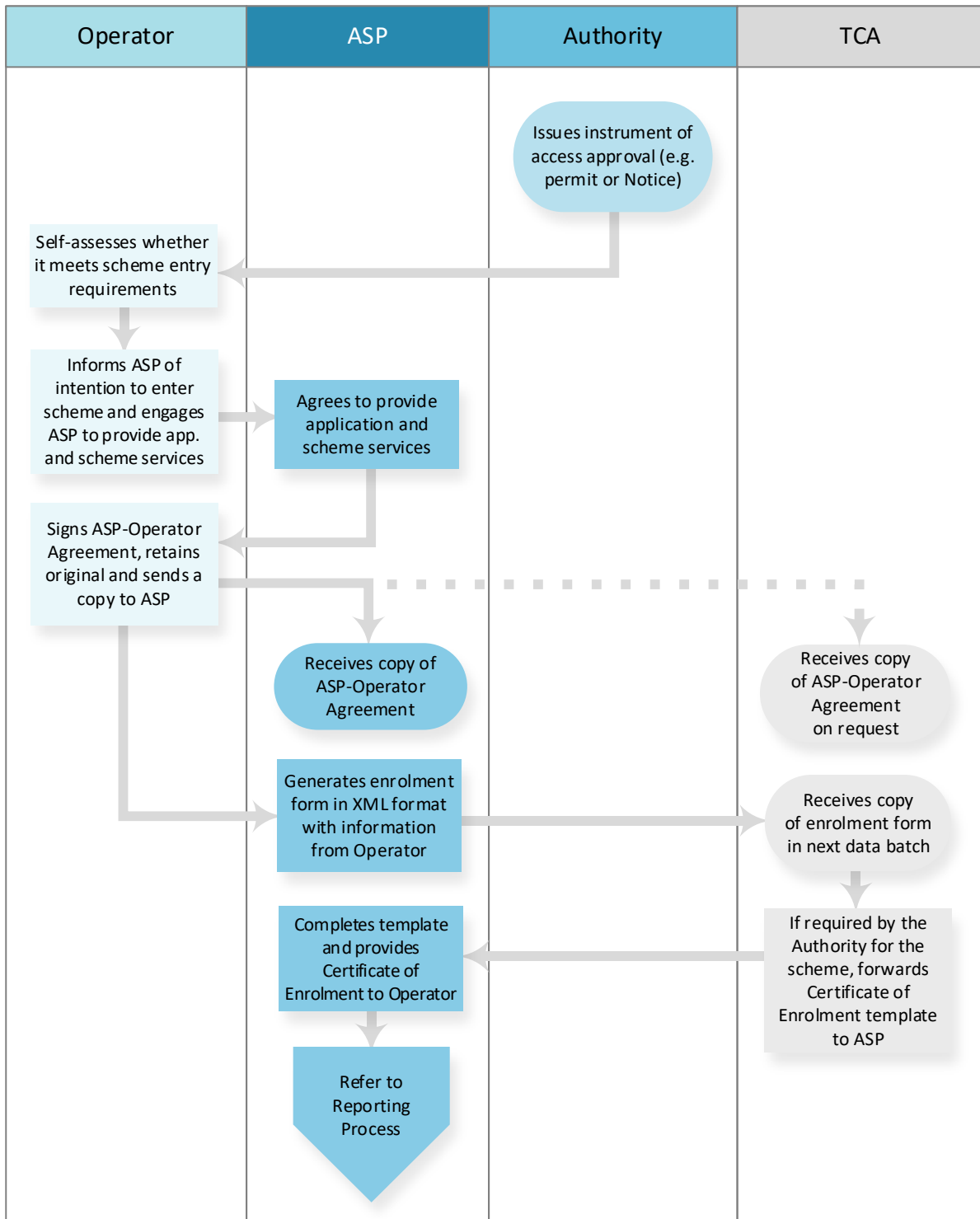
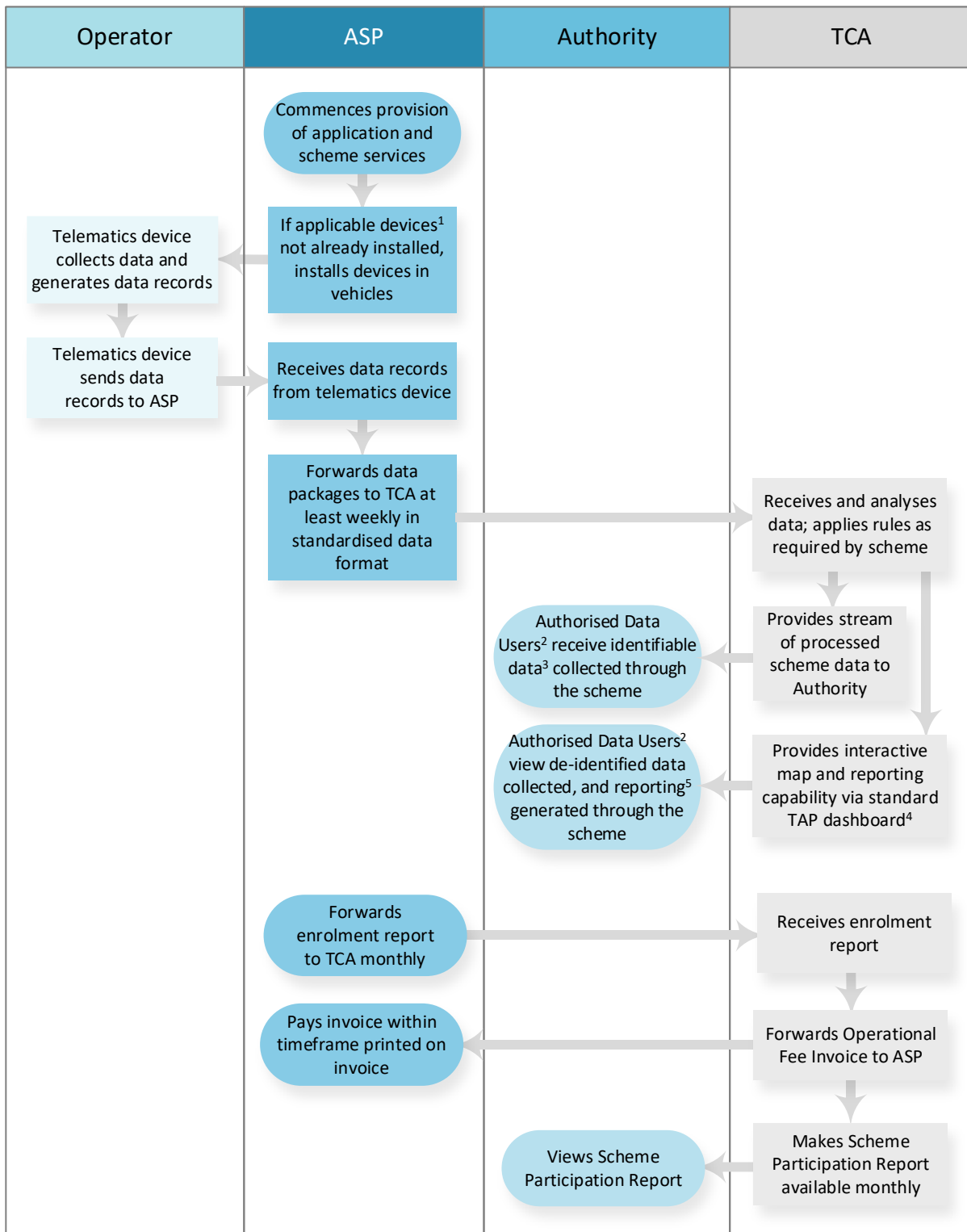


Figure 3 outlines the key actions related to data collection, record generation and reporting.

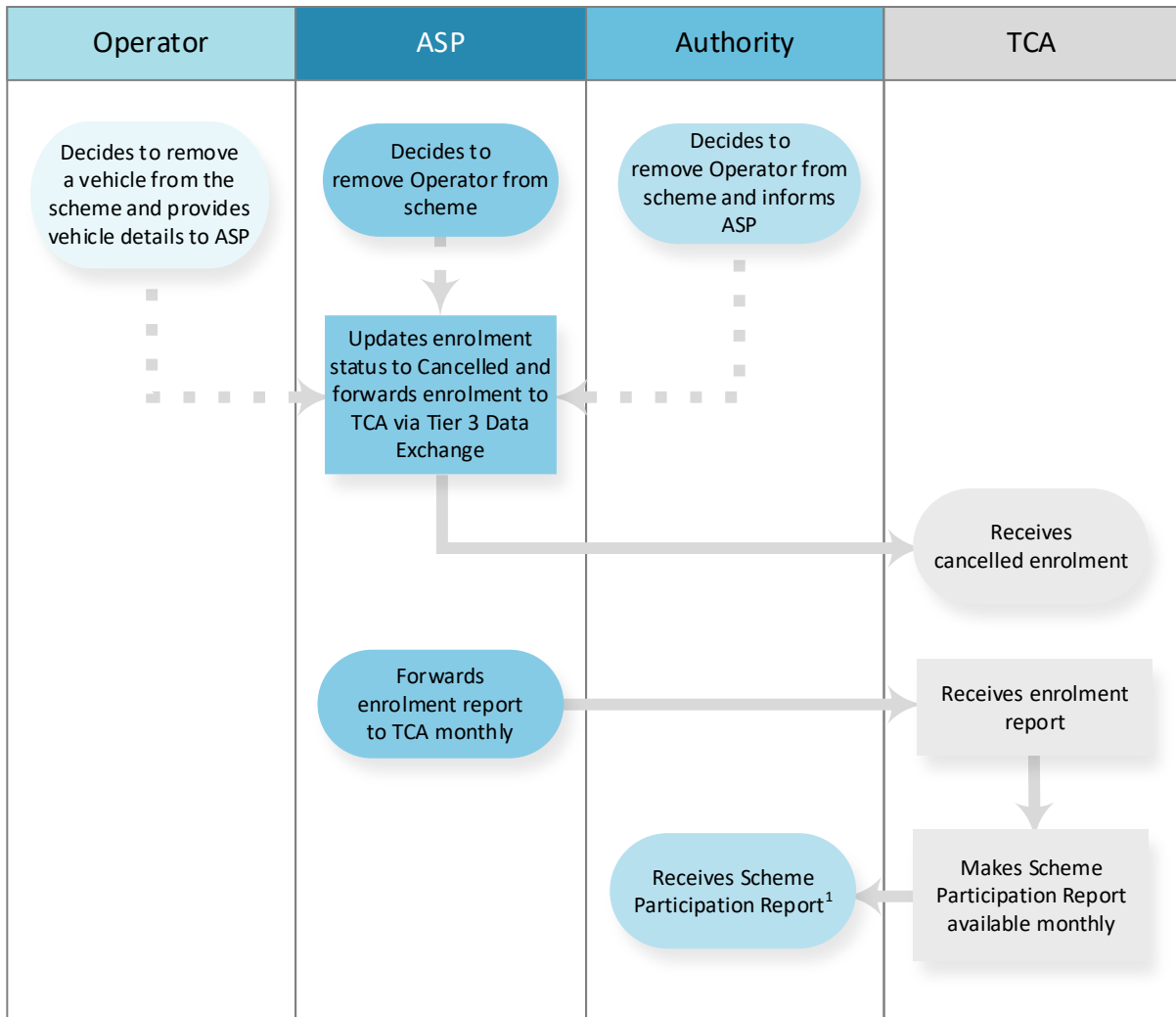
**Figure 3: Reporting Processes**



1. Applicable devices include a TCA-approved telematics device and a user interface connected to the TCA-approved telematics device.
2. Authorised Data Users are permitted to access data in accordance with the Authority's data security policy.
3. Data will be used for the intended purpose of asset management activities.
4. Data will be updated at least weekly.
5. The Authority will nominate the locations that will be subject to location-based reports (subject to agreed terms).

Cancellation of enrolment may be initiated by the Operator, the Authority or the ASP.  
 Figure 4 outlines the key actions to discontinue enrolment of a vehicle.

**Figure 4: Enrolment Cancellation and Reporting Processes**



1. Local governments approved by the Authority may also view this information.

---

## 2.4 Roles and Responsibilities

*Note: The following information is for TMA SPV Monitoring Schemes (QLD) only. This document does not provide information on IAP SPV Monitoring Schemes (QLD) other than the reference information shown in Appendix D.*

In delivering the objectives of a TMA SPV Monitoring Scheme (QLD), **TCA** will:

- Provide a document (this document) describing the use of the scheme as part of the TMA application
- Produce or maintain collateral, as necessary, to support the scheme. Examples include the provision of current versions of:
  - *Telematics Monitoring Application Functional and Technical Specification*
  - *Telematics Business-to-Business Data Exchange Functional and Technical Specification*
  - *Telematics Device Functional and Technical Specification.*
- Support the reporting of data records via Tier 3 Data Exchange using a RESTful API, with these records formatted using a JSON format
- Support the reporting of enrolment forms and enrolment reports using a RESTful API, with these documents formatted using an XML format
- Inform ASPs of scheme details and entry conditions
- Produce a ASP–Operator–Authority Agreement for use with the scheme and make it available from the TCA website
- Ensure that TAP is set up to enable the Authorised Data Users permitted by the Authority to access de-identified reporting generated by the scheme (in accordance with the intended purpose as agreed by the Operator in the ASP–Operator–Authority Agreement), and any malfunctions associated with vehicles enrolled in the scheme
- Ensure that processed data reported to the Authority is in accordance with requirements agreed between TCA and the Authority
- Maintain the cloud environment and databases, etc. for receipt of data records from the TMA application
- Produce and execute an ASP–TCA Certification Agreement, which formalises the relationship between TCA and the ASP with regard to ASP certification, or update the current Agreement
- Produce and execute a Data-Sharing Agreement between TCA, the Authority and other applicable parties, which formalises the arrangements on how scheme data may be shared between parties
- Audit the list of Authorised Data Users on a periodic basis or on request, in accordance with the Data-Sharing Agreement
- Assess and certify whether an ASP meets requirements to provide TMA services
- Approve devices used in the scheme
- Ensure the intellectual property rights of ASPs are protected when assessing whether an ASP can meet operational requirements of the scheme
- If required by the Authority, provide certified ASPs with the Certificate of Enrolment template
- At the end of each month, forward Operational Fee Invoices to ASPs upon receipt of enrolment reports
- With the ASP, monitor via TAP whether a device malfunction has been resolved within agreed timeframes
- Notify the ASP when data from an enrolled vehicle has not been received for one month, followed by the Authority if unresolved
- Provide the Authority with reporting outlined in 2.2e
- Ensure the confidentiality of ASP data is maintained

- 
- Unless directed by the Authority and consented to by the Operator, de-identify the TMA data it has received relating to the Operator's nominated vehicle(s) 12 months from its receipt of the data.

**The Authority will:**

- Maintain documentation required by the Authority for the scheme
- Undertake program coordination activities related to the scheme with TCA
- Monitor whether device malfunctions have been resolved within agreed timeframes  
*Note: TCA will notify the ASP when data has not been received for one month, followed by the Authority if unresolved.*
- Authorise users requesting access to scheme data to access reporting outlined in 2.2e, in accordance with its data security policy, and review data trends and numbers of enrolled vehicles
- At any time, request from TCA the list of users permitted to view de-identified data on the standard TAP dashboard and review it
- Ensure that asset management activities are conducted as necessary
- In conjunction with TCA, communicate scheme-related policy changes to industry and stakeholders.

**ASPs will:**

- Interact with TCA to establish the delivery mechanism for provision of data packages to TCA (noting that a data package includes data records, enrolment forms and enrolment reports)
- Receive notification from Operators regarding the enrolment status of vehicles, and forward this information to TCA using an agreed mechanism on a monthly basis
- Provide the ASP–Operator–Authority Agreement to an Operator once an agreement to provide services for the scheme has been made
- Be responsible for the installation, operation and maintenance of telematics devices and the reporting of data received from those devices, and as described in the *Telematics Monitoring Application Functional and Technical Specification*
- If required by the Authority, provide Certificates of Enrolment to enrolled Operators, using the template received from TCA, and coordinate their removal from vehicles no longer enrolled in the scheme
- Pay Operational Fee Invoices received from TCA, generated upon receipt of enrolment reports, within the timeframe shown on the invoice
- In the event of a device malfunction: liaise with the Operator and/or device supplier to resolve the issue; report the malfunction (unidentifiable) to TCA within the required time period; monitor via TAP whether the device malfunction has been resolved within agreed timeframes; and notify TCA when the malfunction has been resolved
- Provide back-office capability to process collected data records as required by the scheme
- Deliver data records to TCA, using agreed data delivery mechanism, required data formats and meeting data reporting requirements.

**Operators will:**

- Access scheme rules and entry conditions on the Authority website (or other website as applicable such as the NHVR) and determine whether they meet those conditions
- Access the applicable instrument of access approval from the NHVR website and ensure compliance with its requirements for the scheme
- Upon self-assessment that scheme entry conditions are met, notify the ASP of its intention to enrol in the scheme

- 
- Agree to share data collected by its ASP with TCA for the scheme using a signed ASP–Operator–Authority Agreement
  - Follow rules for enrolment in the scheme
  - Store original signed ASP–Operator Agreement and forward copies to the ASP and TCA (on request)
  - Engage an ASP to provide services for the scheme
  - Take all reasonable steps to ensure the vehicle’s driver, before a journey begins, is aware of their obligation to report to the Operator a malfunction of the telematics device or user interface fitted to the vehicle, as soon as practicable after becoming aware of the malfunction
  - As soon as practicable after becoming aware of the malfunction of the telematics device or user interface report the malfunction to the ASP (which will then report the malfunction to TCA within the required time period)
  - Notify the ASP of the date that a vehicle or the Operator will no longer participate in the scheme.

---

## A Acronyms and Definitions

### Acronyms

Acronym	Definition
API	application programming interface
ASP	Application Service Provider
GNSS	Global Navigation Satellite System
IAP	Intelligent Access Program
NHVR	National Heavy Vehicle Regulator
NTF	National Telematics Framework
SPV	Special Purpose Vehicle
TAP	Telematics Analytics Platform
TMA	Telematics Monitoring Application
TMR	Department of Transport and Main Roads
UTC	Coordinated Universal Time

### Definitions

Term	Definition
application	A capability of the NTF that provides business value to stakeholders, delivered as an assembly of policy, business components and technical components, within in the context of an identified level of assurance.
Application Service Provider (ASP)	A service provider that has been certified by TCA as meeting the requirements of one of more telematics applications.
approval mechanism	The mechanism by which TCA approves a device, such as a telematics device or connected device, for use in a telematics application. The approval mechanism used may be type-approval, or an equivalent approval mechanism acceptable to TCA.
ASP–TCA Certification Agreement	The written agreement made between an ASP and TCA that recognises the fact that the ASP, having satisfied TCA’s requirements for appointment as an ASP, is appointed in that capacity, and sets out the legal obligations of each party with respect to the ongoing role of the ASP.
ASP–Operator Agreement	A written agreement between an ASP, an Operator and TCA which sets out the terms on which the ASP will provide application services to the Operator, and the intended purpose for collecting data from the Operator’s vehicle(s) enrolled in the scheme.
ASP–Operator–Authority Agreement	A written agreement between an ASP, an Operator, an Authority and TCA which sets out the terms on which the ASP will provide application services to the Operator, and the intended purpose for collecting data from the Operator’s vehicle(s) enrolled in the scheme group.

Term	Definition
asset management activities	<p>For the purposes of this scheme group, activities related to the management of road assets in Queensland, using scheme data either alone or integrated with other data available to the Authority.</p> <p>The data will be used solely for the purposes of:</p> <ul style="list-style-type: none"> <li>• Producing internal analysis and reporting regarding movement of enrolled SPVs in Queensland</li> <li>• Providing a basis of assurance that the Queensland road network is being accessed and utilised in accordance with the Authority's engineering-based infrastructure assessments</li> <li>• Providing an evidence base for re-assessing engineering infrastructure assessments in the event of substantial movements outside approved routes and structures by enrolled SPVs.</li> </ul> <p><i>Note: Asset management activities do not include compliance or enforcement activities, and scheme data will be provided only to Authorised Data Users in accordance with the Authority's data security policy.</i></p>
Authorised Data User	For the purposes of this scheme group, a data user, not engaged in compliance or enforcement activities, who is authorised by the Authority to access de-identified or identifiable data of this scheme group in accordance with its data security policy.
Authority	An entity, associated with a jurisdiction, responsible for the administration of one or more NTF applications. An Authority may appoint an administrator to perform its functions. <i>See also: jurisdiction.</i>
connected device	Any device or technology connected to a telematics device.
data collection period	A whole number of days in the UTC time zone for which all application data is provided. Successive data collection periods are contiguous.
data package	A package of information sent via Tier 3 Data Exchange for a data collection period.
data record	A discrete and defined set of data elements generated by a device.
data security policy	For the purposes of this scheme group, the policy, of which the Authority is custodian, that describes levels of data access and security in relation to TMA schemes where TCA may provide the Authority with de-identified and/or identifiable data.
enrolment	Both the process and outcome by which an Operator enters an Authority's scheme. Each vehicle must be enrolled for each scheme it participates in. Enrolment also confirms the application and conditions (if applicable) that the vehicle is monitored under.
enrolment form	An electronic document that formally and simultaneously records the enrolment of a vehicle within a scheme, and within the application required by that scheme.
enrolment report	A summary of enrolments relevant to a given Authority for a specified reporting period, including any aggregated data required by specific applications.
identifiable data	Data which contains one or more elements that identifies a specific and singular vehicle (such as vehicle identification number, or vehicle registration number plus state of registration).
jurisdiction	A geographical area containing a road network (i.e. typically an Australian state or territory).

Term	Definition
level of assurance	An assurance level that supports telematics applications, structured around the intended use of a telematics application, risks being managed, and the needs and expectations of consumers and other stakeholders.
Level 2 Assurance	Independent assessment of specific elements of a telematics application. Telematics data is combined with other data sources.
Operator	An entity that operates one or more vehicles eligible to enter a scheme.
reporting	The TAP visualisations and stream of processed data that TCA will make available to individuals authorised by the Authority in accordance with its data security policy.
scheme	The generic term for a specific use of an application linked to delivering a policy objective.
self-declaration	The self-declaration of data by an Operator and/or its nominated representative to the ASP.
Special Purpose Vehicle (SPV)	A motor vehicle or trailer, other than an agricultural vehicle or a tow truck, built for a purpose other than carrying goods. Examples include mobile cranes, concrete pump trucks and drill rigs.
telematics device	The primary TCA-approved telematics unit that monitors vehicle parameters, which may include identity, datetime, location, speed, vehicle category or mass.
Tier 1 Data Exchange	A web services solution where structured information is exchanged that complies with requirements such as authentication, security, privacy and certainty of delivery. It includes exchanges of information related to a vehicle's enrolment in telematics applications, conditions and adherence to those conditions.
Tier 2 Data Exchange	The human-initiated (rather than automated) exchange of business-related information and advice. Typical exchanges via this tier include reporting of issues and resolutions, correspondence regarding certification and re-certification, advice regarding information and communications technology (ICT), data assurance and other reporting.
Tier 3 Data Exchange	The packaging and delivery of data packages, comprising data records and enrolment-related artefacts. Data packages have several uses which include data analysis by the recipient, data assurance, and for research purposes.
user interface	A generic term for any device or interface used by the Operator and/or its nominated representative to enter data into the telematics device or ASP System. <i>Note: In the Intelligent Access Program (IAP) application, the user interface is referred to as a self-declaration input device (SDID).</i>

---

## B TMA Crane SPV Monitoring Scheme (QLD)

### Purpose

The TMA Crane SPV Monitoring Scheme (QLD) is a scheme administered by TMR to monitor road utilisation of mobile crane SPVs operating under the instrument of access approval on approved routes and structures of the Queensland road network.

### Background

To participate in the scheme, Operators must conform with the requirements specified within the instrument of access approval.

Eligible vehicles may be enrolled in the scheme and must be fitted with a TCA-approved telematics device. If self-declaration is required (see 2.2c), eligible vehicles must also be either fitted with a TCA-approved user interface for self-declaration, or allow self-declaration through a TCA-approved user interface associated with the ASP System.

TMR monitors vehicles enrolled in the scheme on routes as described in the instrument of access approval and indicated on network maps available on the TMR website.

### Scheme Features

Through TAP, Authorised Data Users will have access to reporting as described in 2.2e that includes road utilisation of enrolled vehicles on the Queensland road network.

Other aspects of this scheme operate in accordance with generic TMA SPV Monitoring Scheme (QLD) processes, such as ASP Certification, Enrolment, Data Reporting, and Data Analysis and Reports. For more information, see 2.2.

Refer to the following when entering values into data elements for Scheme or Authority Code – for example, in an enrolment report or enrolment form.

**Table B.1: Scheme Name and Authority Code**

<b>Scheme Name (full)</b>	<b>Scheme Data Element Value (e.g. for enrolment form or report)</b>	<b>Authority Code Data Element Value</b>
TMA Crane SPV Monitoring Scheme (QLD)	TMASPVQLDCR	QLD

---

## C TMA Non-Crane SPV Monitoring Scheme (QLD)

### Purpose

The TMA Non-Crane SPV Monitoring Scheme (QLD) is a scheme administered by TMR to monitor road utilisation of non-crane SPVs operating under the instrument of access approval on approved routes and structures of the Queensland road network.

### Background

To participate in the scheme, Operators must conform with the requirements specified within the instrument of access approval.

Eligible vehicles may be enrolled in the scheme and must be fitted with a TCA-approved telematics device. If self-declaration is required (see 2.2c), eligible vehicles must also be either fitted with a TCA-approved user interface for self-declaration, or allow self-declaration through a TCA-approved user interface associated with the ASP System.

TMR monitors vehicles enrolled in the scheme on routes as described in the instrument of access approval and indicated on network maps available on the TMR website.

### Scheme Features

Through TAP, Authorised Data Users will have access to reporting as described in 2.2e that includes road utilisation of enrolled vehicles on the Queensland road network.

Other aspects of this scheme operate in accordance with generic TMA SPV Monitoring Scheme (QLD) processes, such as ASP Certification, Enrolment, Data Reporting, and Data Analysis and Reports. For more information, see 2.2.

Refer to the following when entering values into data elements for Scheme or Authority Code – for example, in an enrolment report or enrolment form.

**Table C.1: Scheme Name and Authority Code**

<b>Scheme Name</b> (full)	<b>Scheme Data Element Value</b> (e.g. for enrolment form or report)	<b>Authority Code</b> <b>Data Element Value</b>
TMA Non-Crane SPV Monitoring Scheme (QLD)	TMASPVQLDNCR	QLD

---

## D IAP Scheme Reference

This appendix contains details of IAP SPV Monitoring Schemes (QLD). They are presented here for reference only.

**Table D.1: IAP Scheme Names and Authority Codes**

<b>Scheme Name (full)</b>	<b>IAP Application Name Data Element Value</b>	<b>Off-the Shelf Conditions ID</b>	<b>Authority Code Data Element Value</b>
IAP SPV Monitoring Scheme – Category 1 SPVs (QLD)	Special Purpose Vehicles	SPV_QLD_C1	QLD
IAP SPV Monitoring Scheme – Category 2 SPVs (QLD)	Special Purpose Vehicles	SPV_QLD_C2	QLD
IAP SPV Monitoring Scheme – Category 3 SPVs (QLD)	Special Purpose Vehicles	SPV_QLD_C3	QLD



---

## Contact

**Transport Certification Australia**  
Level 17, 360 Elizabeth Street  
Melbourne VIC 3000

Phone: + 61 3 8601 4600  
Email: [tca@tca.gov.au](mailto:tca@tca.gov.au)  
Website: [www.tca.gov.au](http://www.tca.gov.au)

---